

Kajaria

GRÉS

India's Trusted Tile

GRÉSART
HIGH DEFINITION ACCENT TILES



75x225 mm | 75x300 mm | 100x300 mm | 198x198 mm

Kajaria

GRES

India's Trusted Tile

GRESART

high definition
accent tiles

We are thrilled to introduce our new collection of GRESART, a celebration of craftsmanship and creativity. Perfectly blending functionality with aesthetic appeal, these tiles feature intricate designs, vibrant colors, and unique textures that add character to any space. Ideal for accent walls, backsplashes, or decorative touches.



reveal
the magnificence

GRESART allow you to express your style in ways both bold and subtle. Each piece is a work of art, crafted to inspire and transform your spaces into visual masterpieces. Discover the endless possibilities with our artistic tiles and make your décor truly one of a kind!





75x
300mm

Page No. : 16-31



75x
225mm

Page No. : 06-15



198 X
198 mm

Page No. : 48-79

100 X
300 mm

Page No. : 32-47



GRÉSART

HIGH DEFINITION ACCENT TILES

75x
225mm

Digital | Special Effects | Color Body

FLOOR
BODY



Chemical
Resistance



Heat & Fire
Resistance



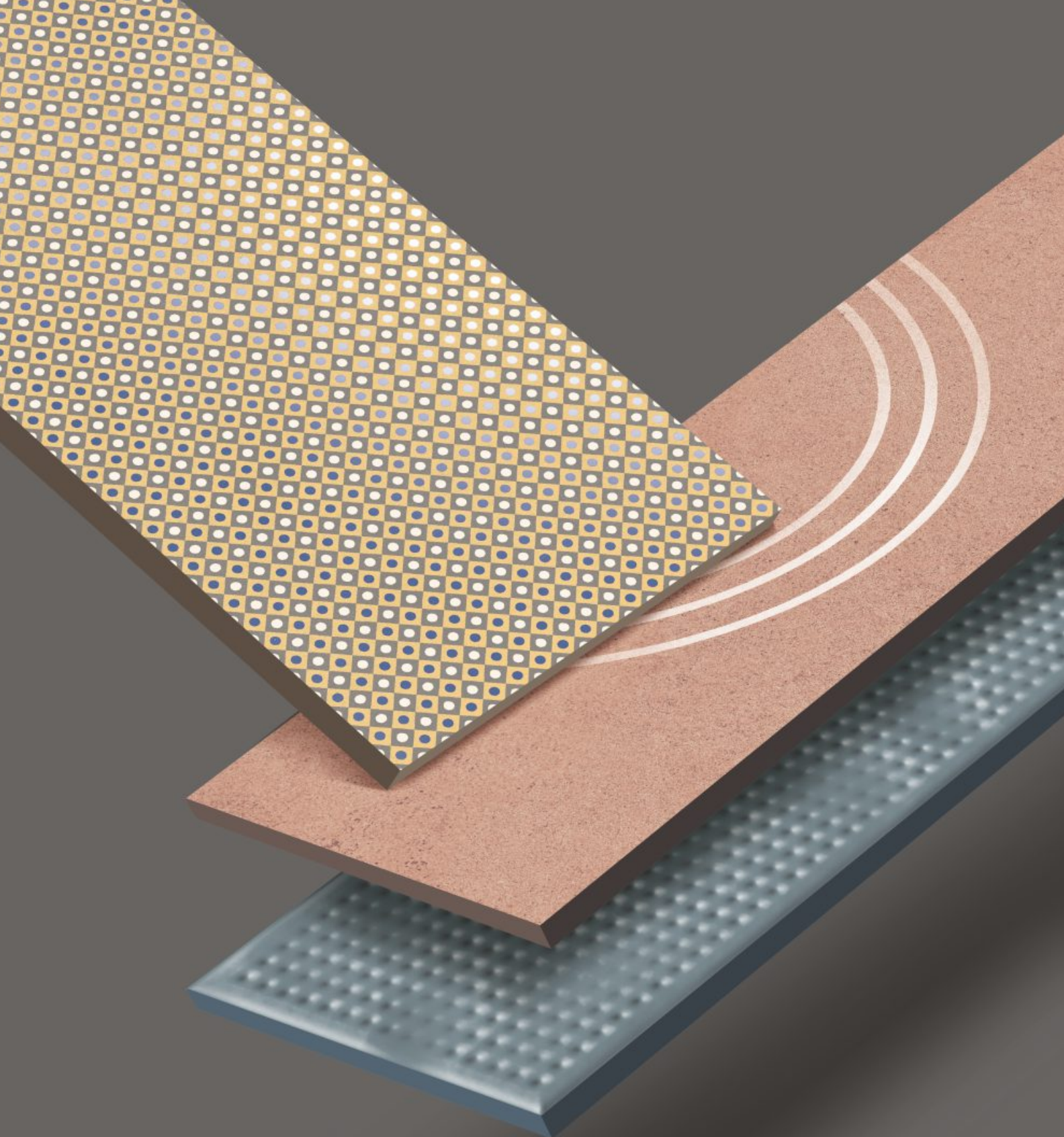
Abrasion
Resistance



Less Water
Absorption



Environment
Friendly



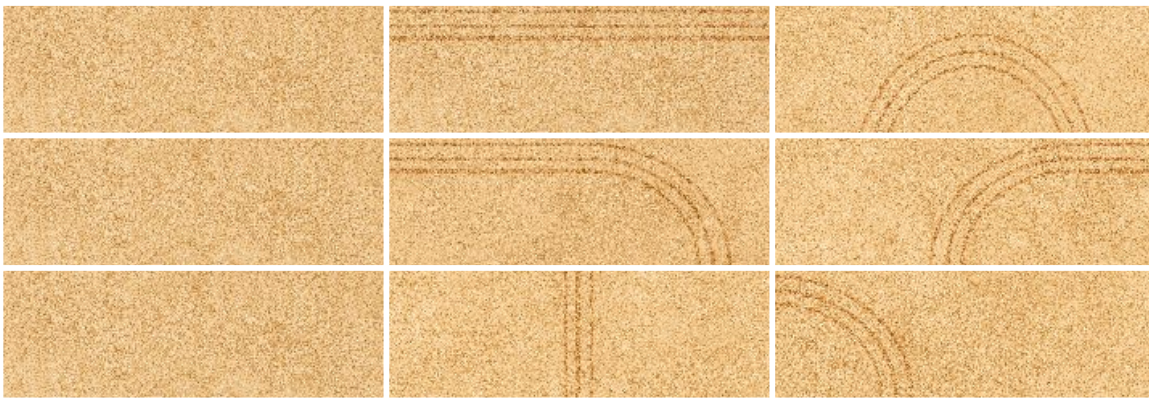
**WHERE
BRILLIANCE
MEETS
CRAFTSMANSHIP**



Digital / Special Effects

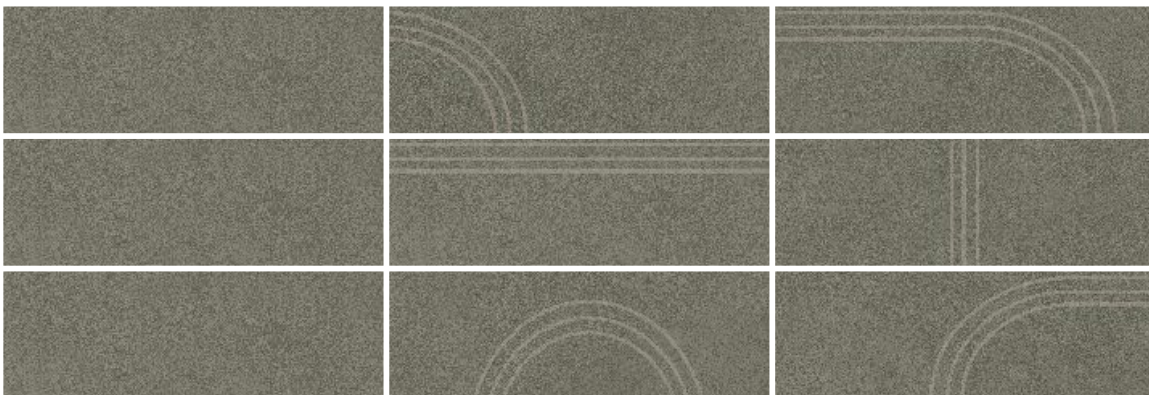
75 x 225 mm

Matt / Glue & Granula



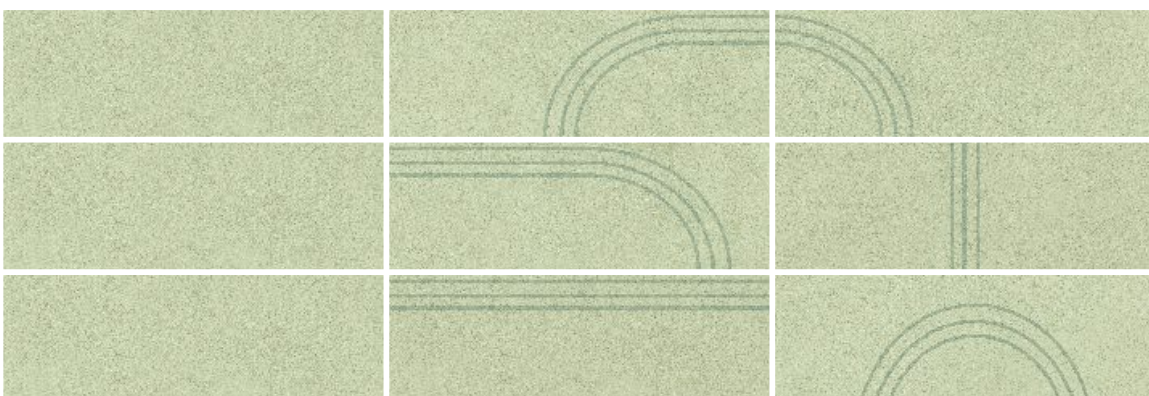
GA 2001 (Matt)

GA 2002 (Glue & Granula)



GA 2003 (Matt)

GA 2004 (Glue & Granula)



GA 2005 (Matt)

GA 2006 (Glue & Granula)



Digital / Special Effects

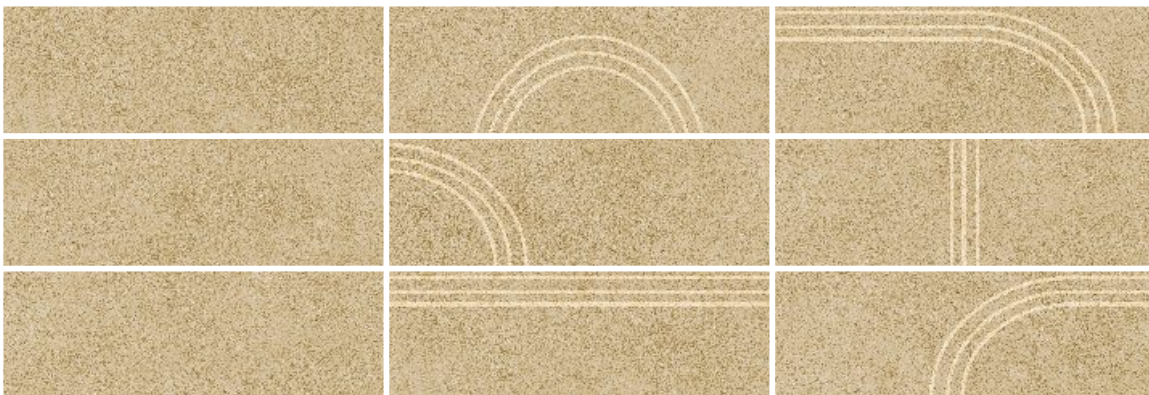
75 x 225 mm

Matt / Glue & Granula



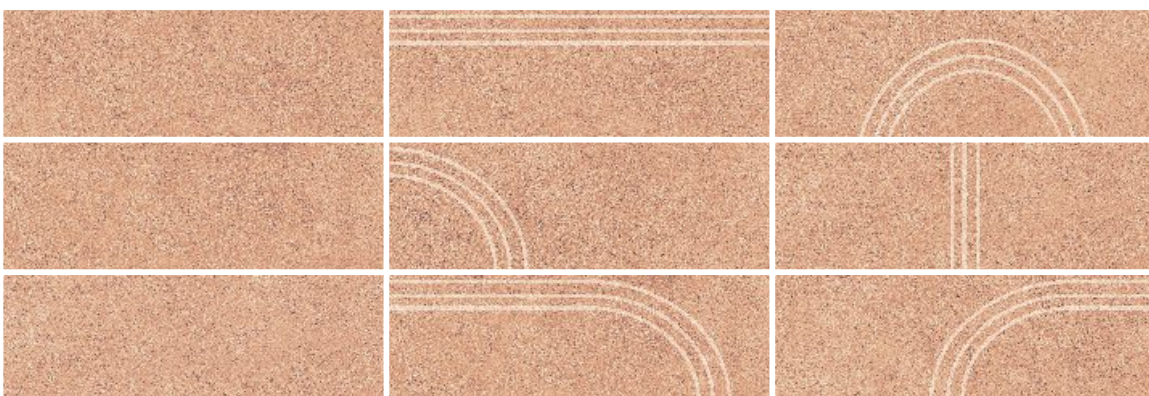
GA 2007 (Matt)

GA 2008 (Glue & Granula)



GA 2009 (Matt)

GA 2010 (Glue & Granula)



GA 2011 (Matt)

GA 2012 (Glue & Granula)

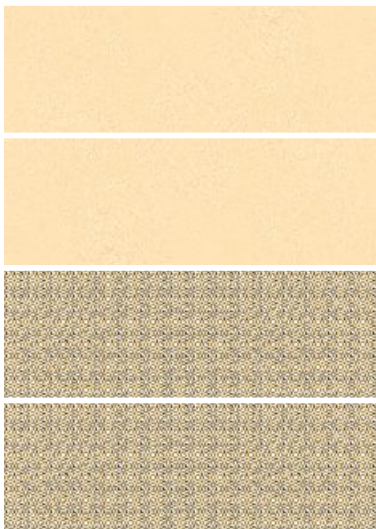


Digital / Special Effects

75 x 225 mm

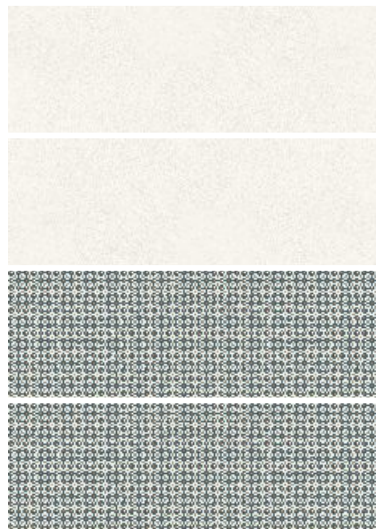
Matt / Glue & Granula

GA 2013 (Matt)



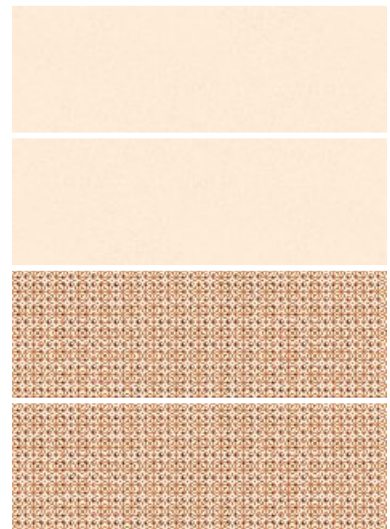
GA 2014 (Glue & Granula)

GA 2015 (Matt)



GA 2016 (Glue & Granula)

GA 2017 (Matt)



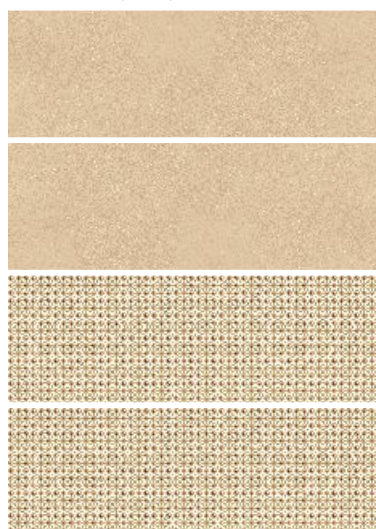
GA 2018 (Glue & Granula)

GA 2019 (Matt)



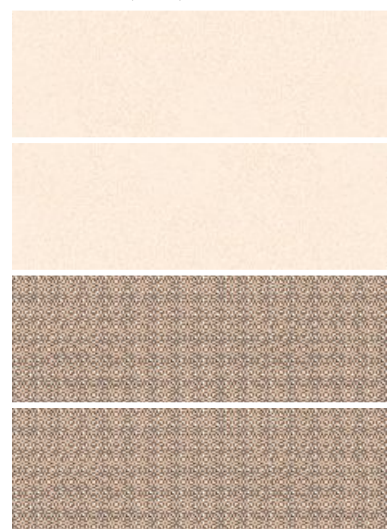
GA 2020 (Glue & Granula)

GA 2021 (Matt)



GA 2022 (Glue & Granula)

GA 2023 (Matt)



GA 2024 (Glue & Granula)

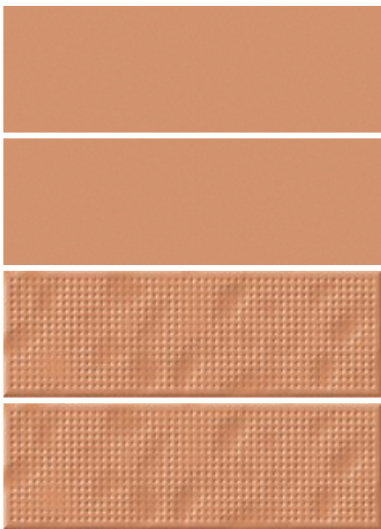


Color Body

75 x 225 mm

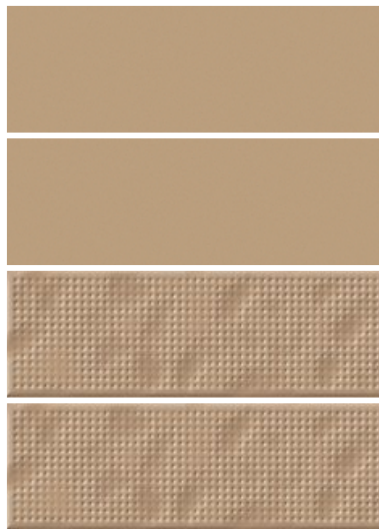
Matt

GA 2025



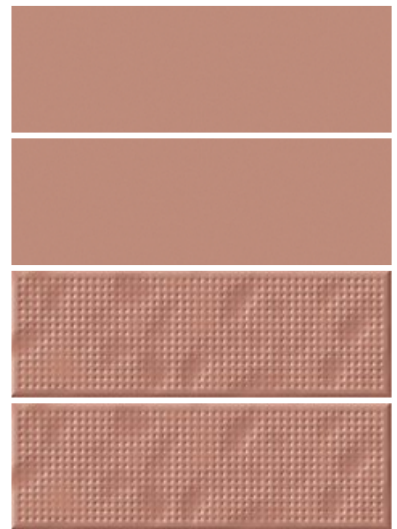
GA 2031

GA 2026



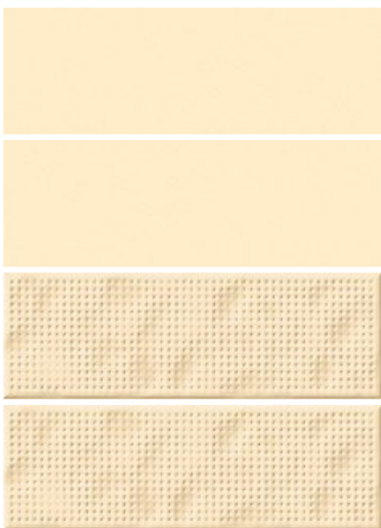
GA 2032

GA 2027



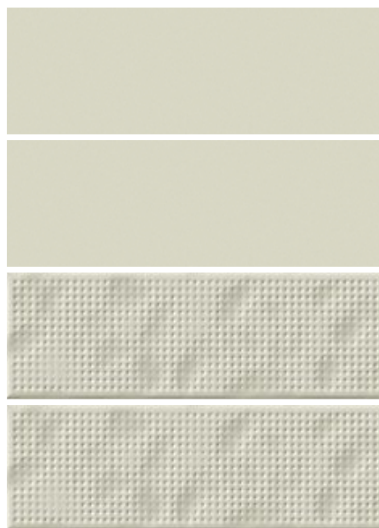
GA 2033

GA 2028



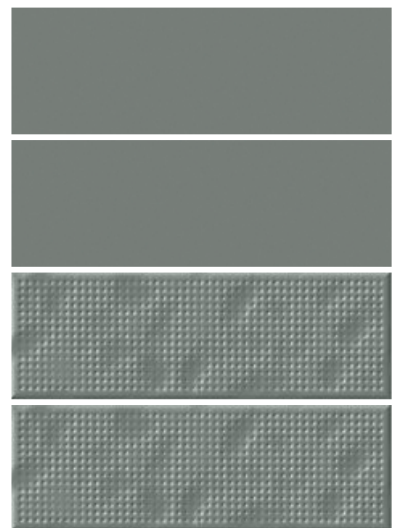
GA 2034

GA 2029



GA 2035

GA 2030



GA 2036

GRÉSART

HIGH DEFINITION ACCENT TILES

75x
300mm

Digital | Special Effects



Chemical
Resistance



Heat & Fire
Resistance



Abrasion
Resistance



Less Water
Absorption



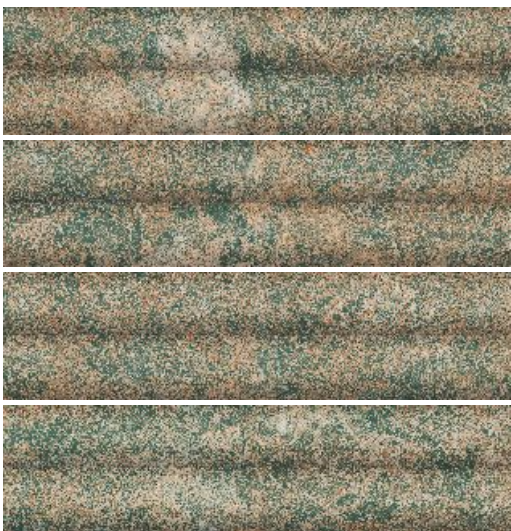
Environment
Friendly



**VIBRANCE
IN EVERY
HUE**



GA 3001



GA 3001

Bamboo | Special Effects

75 x 300 mm

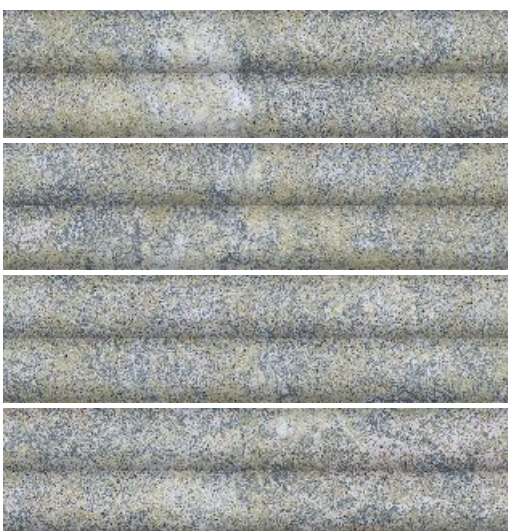
Glue & Granula



GA 3002



GA 3003



GA 3004



GA 3005



GA 3010



GA 3007

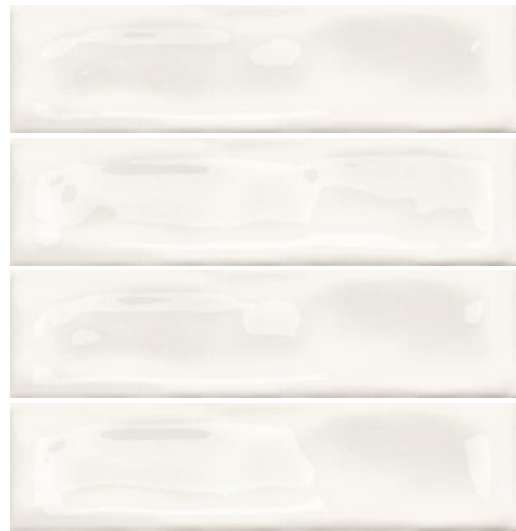
Hue Running Color

75 x 300 mm

Glossy



GA 3010



GA 3013



GA 3015



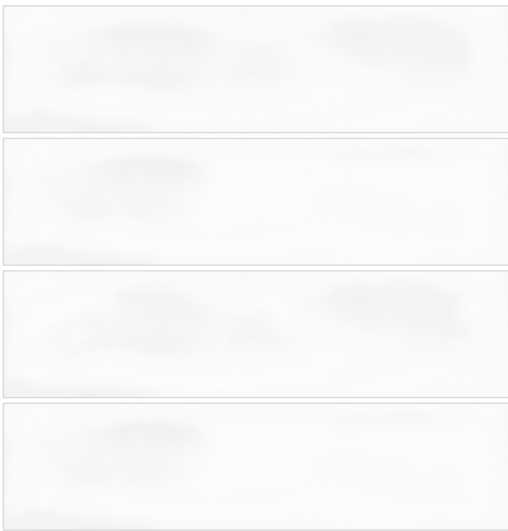
GA 3016



Hue Running Color

75 x 300 mm

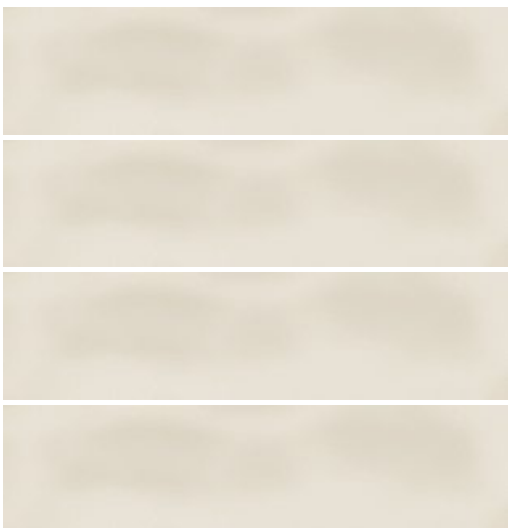
Matt



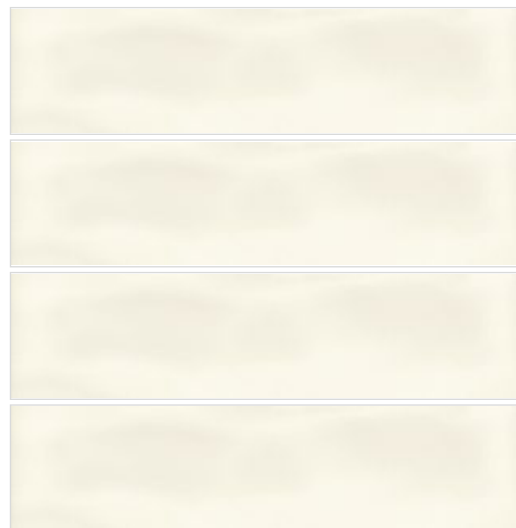
GA 3018



GA 3020



GA 3024



GA 3027



GA 3011

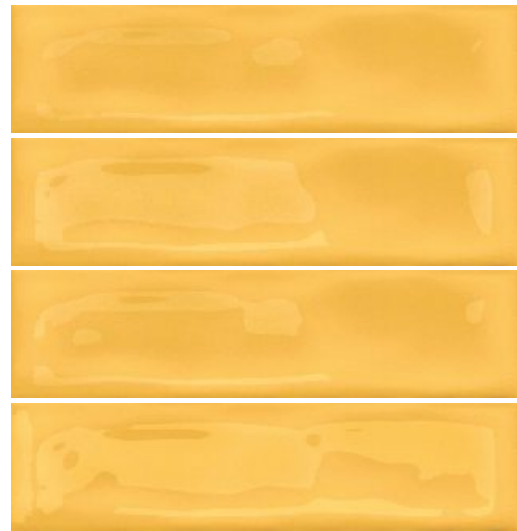
Hue Special Color

75 x 300 mm

Glossy / Matt



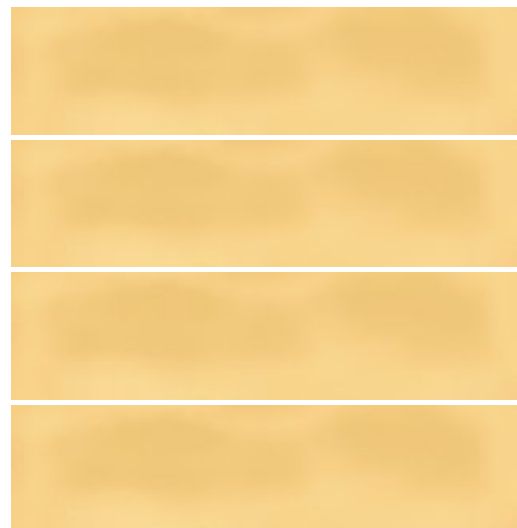
GA 3009 (Glossy)



GA 3011 (Glossy)



GA 3012 (Glossy)



GA 3022 (Matt)



Hue Super Special Color

75 x 300 mm

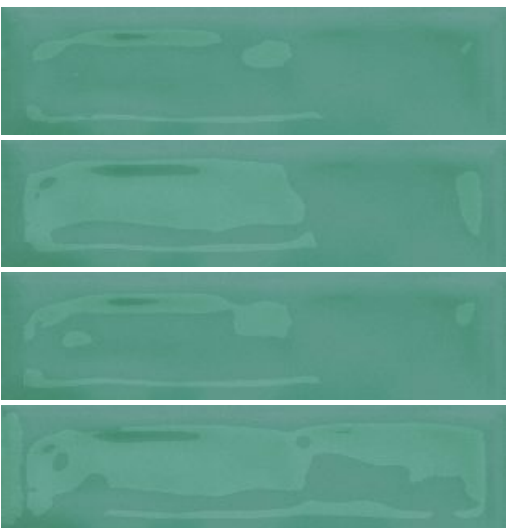
Glossy



GA 3006



GA 3008



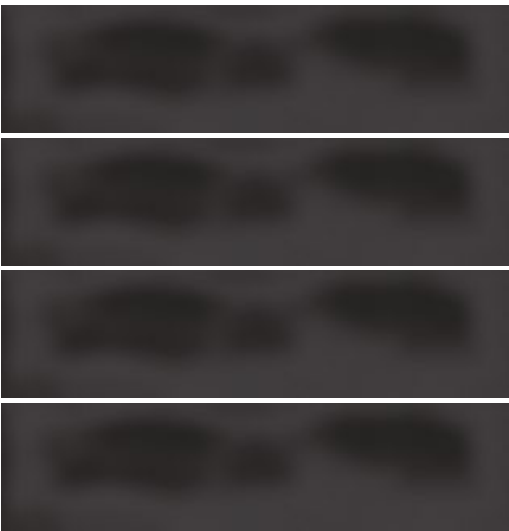
GA 3014



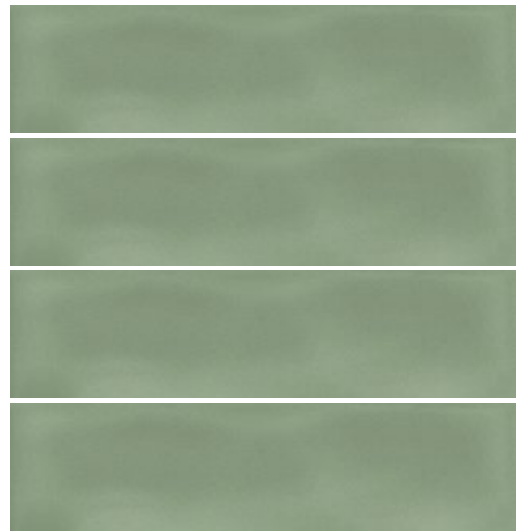
Hue Super Special Color

75 x 300 mm

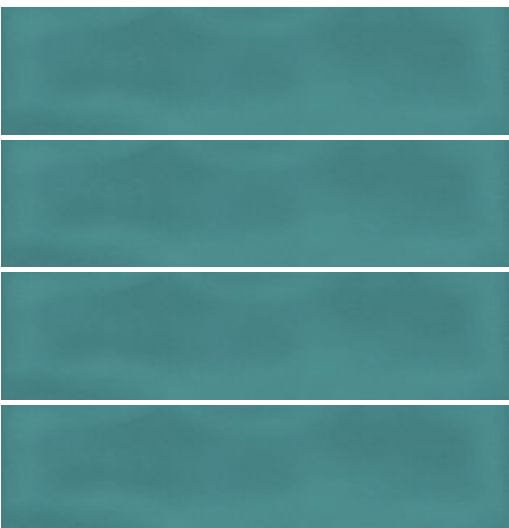
Matt



GA 3019



GA 3021



GA 3023



GA 3025



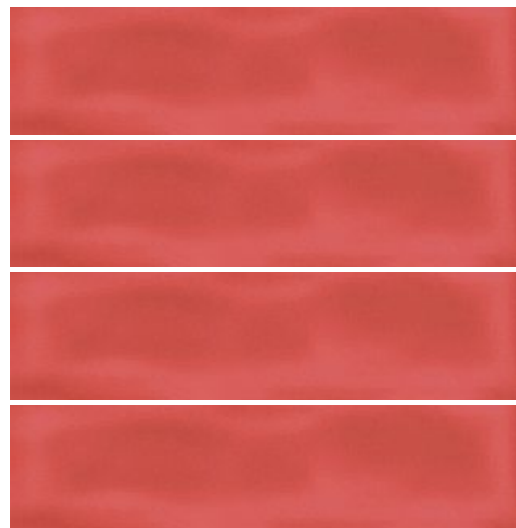
Hue Exclusive Color

75 x 300 mm

Glossy / Matt



GA 3017 (Glossy)



GA 3026 (Matt)

GRÉSART

HIGH DEFINITION ACCENT TILES

100 X
300mm

Terra



Chemical
Resistance



Heat & Fire
Resistance



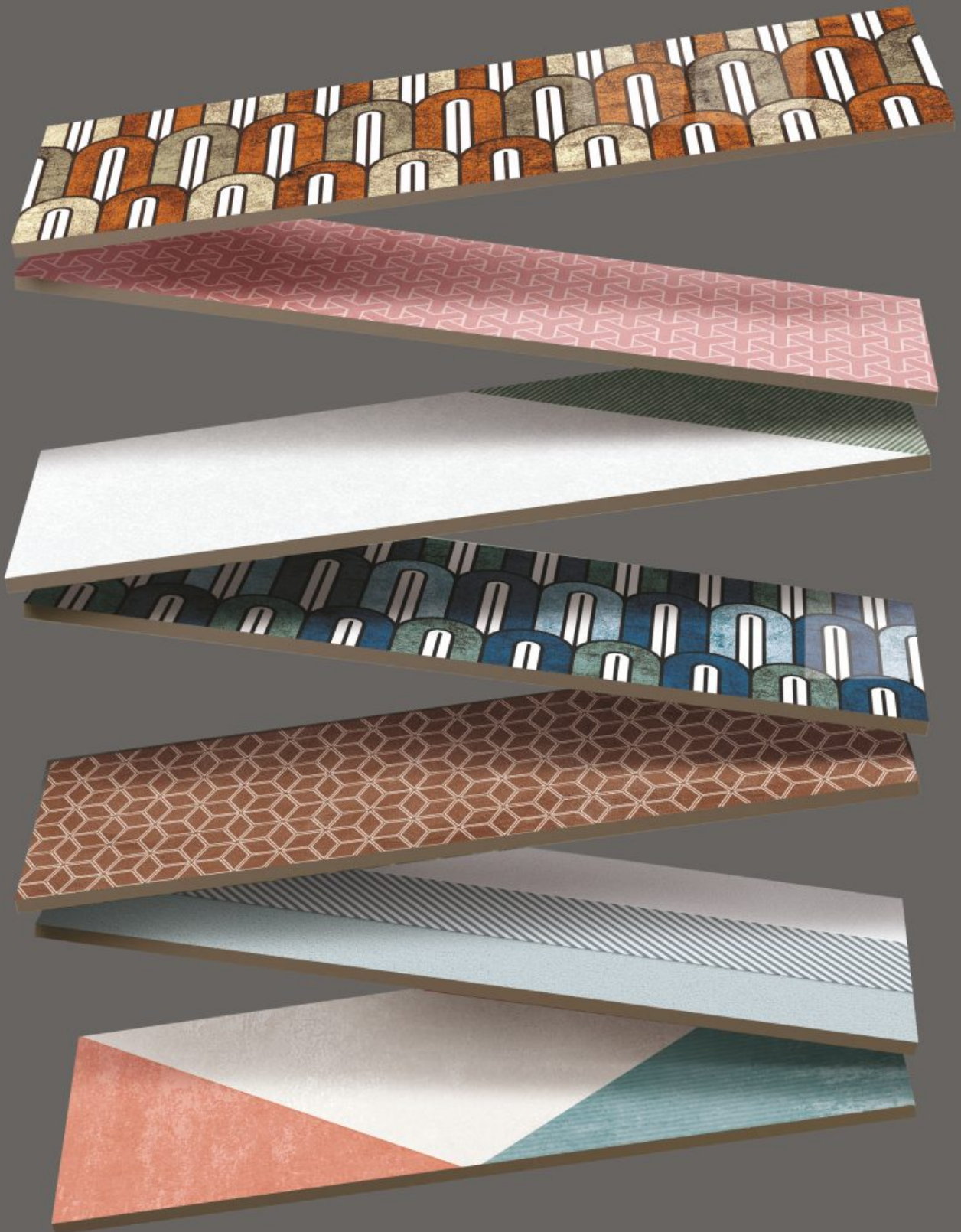
Abrasion
Resistance



Less Water
Absorption



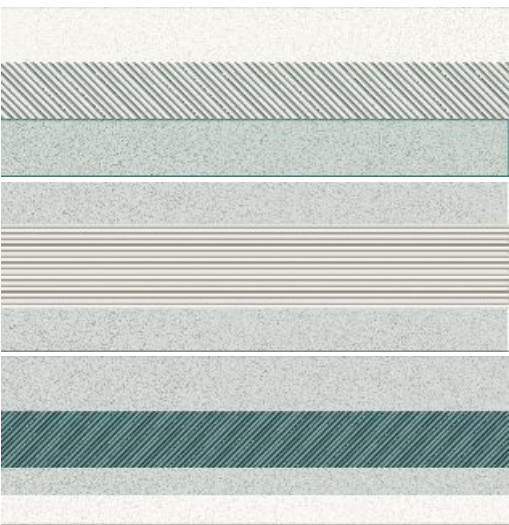
Environment
Friendly



UNVEILING
THE ART
OF OPULENCE



GA 4001



GA 4001

Terra

100 x 300 mm

Matt



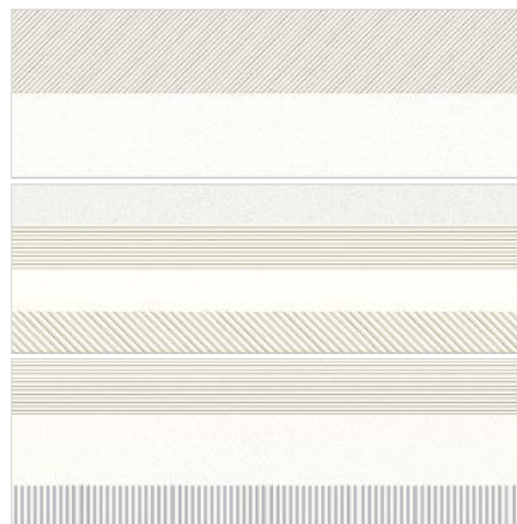
GA 4002



GA 4003



GA 4004



GA 4005

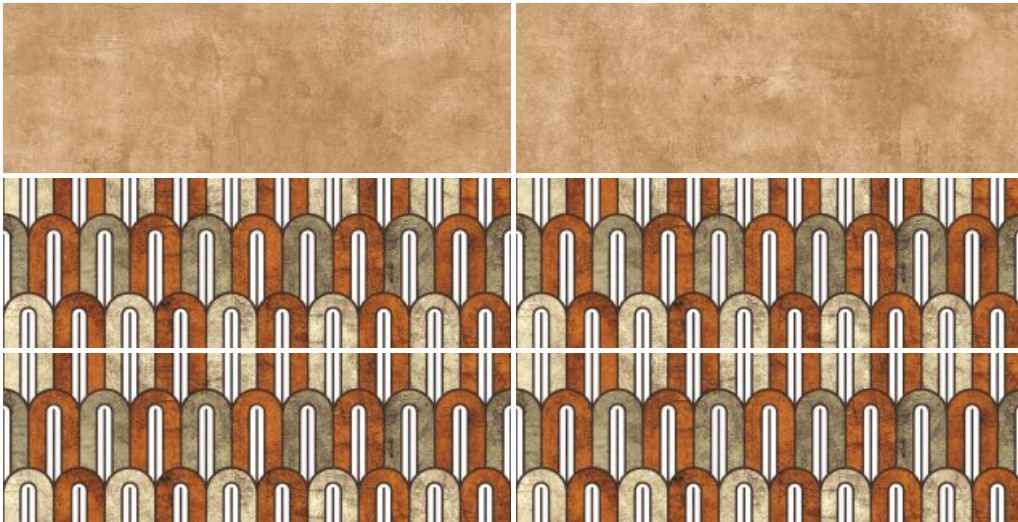


Terra

100 x 300 mm

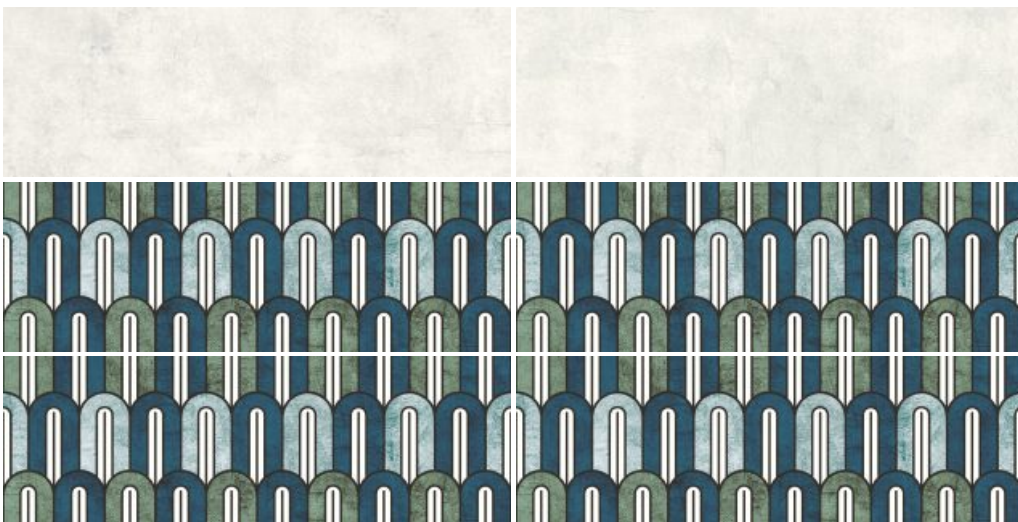
Glossy

GA 4006



GA 4007

GA 4008



GA 4009



Terra

100 x 300 mm

Matt



GA 4010

GA 4011



GA 4013

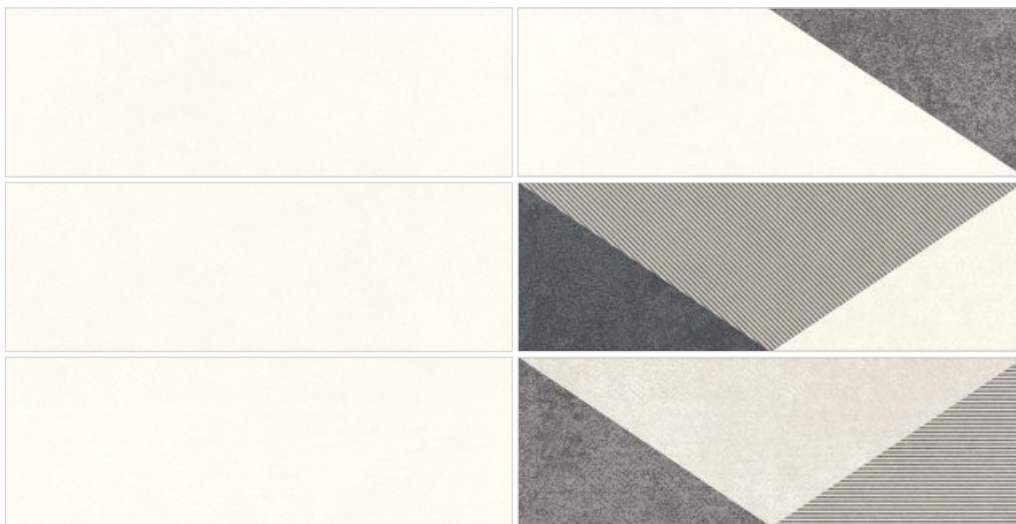
GA 4012



Terra

100 x 300 mm

Matt



GA 4013

GA 4014



GA 4015

GA 4016

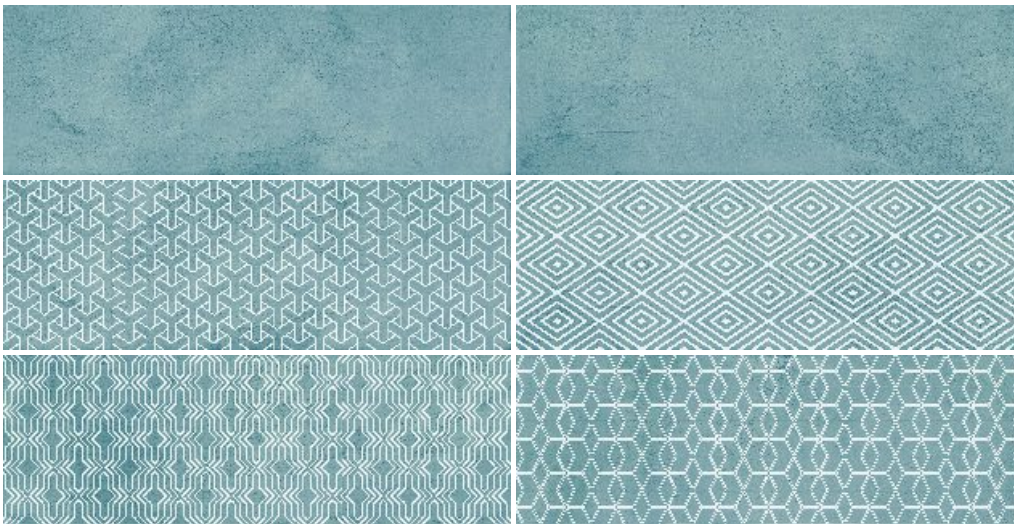


Terra

100 x 300 mm

Glossy

GA 4017



GA 4018

GA 4019



GA 4020



GA 4025 & GA 4026

GA 4021



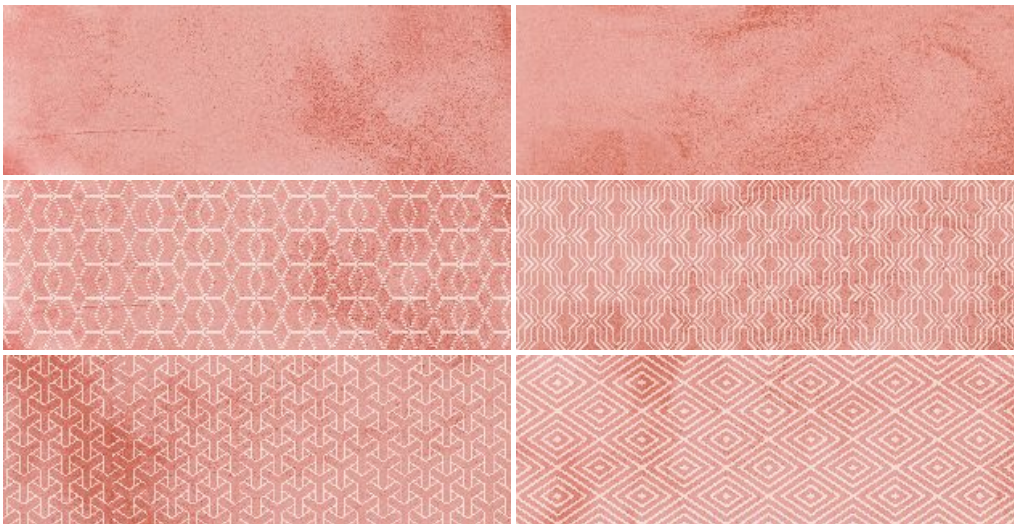
GA 4022

Terra

100 x 300 mm

Glossy

GA 4023



GA 4024

GA 4025



GA 4026

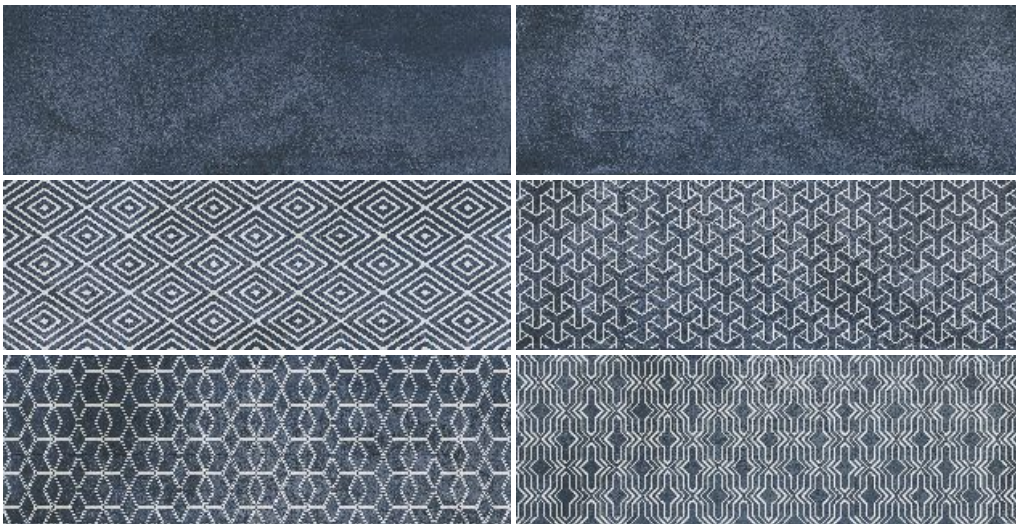


Terra

100 x 300 mm

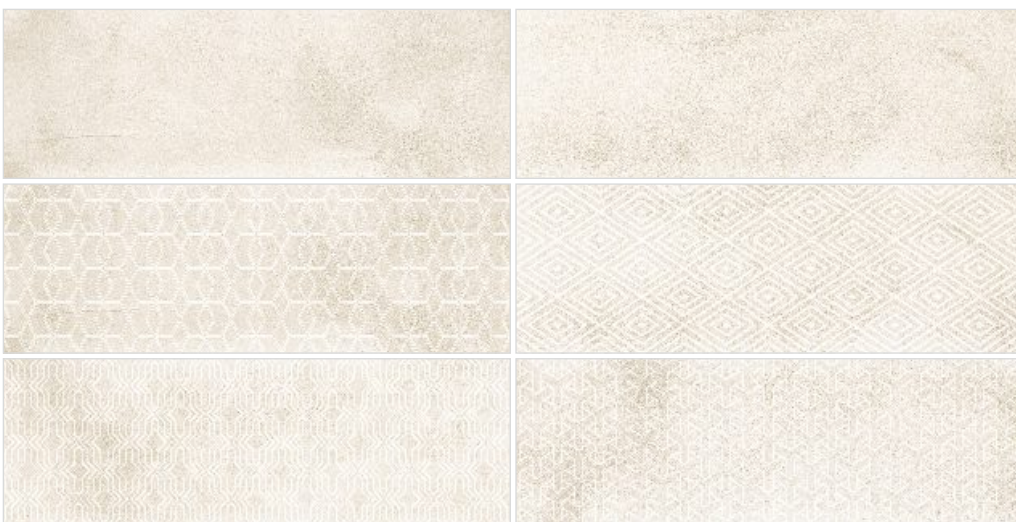
Glossy

GA 4027



GA 4028

GA 4029



GA 4030

GRÉSART

HIGH DEFINITION ACCENT TILES

198
198^x
198mm

Digital | Special Effects | Color Body

FLOOR
BODY



Chemical
Resistance



Heat & Fire
Resistance



Abrasion
Resistance



Less Water
Absorption



Environment
Friendly

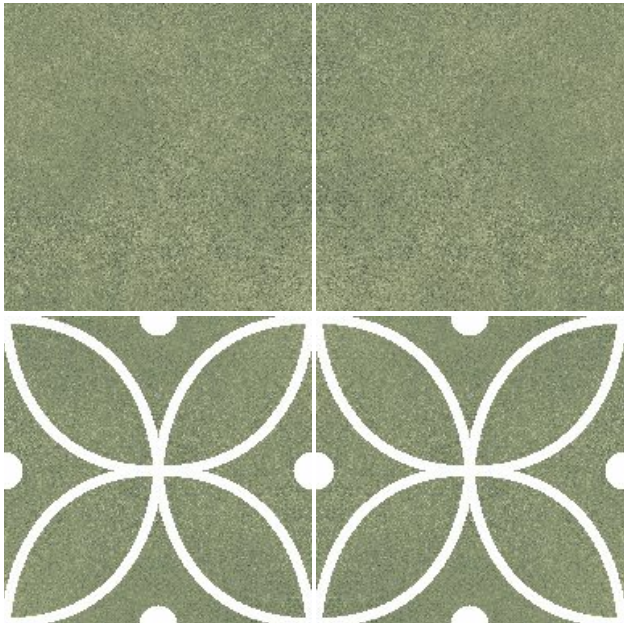


**THE
CRAFT OF
ELEGANCE**



GA 1001 & GA 1002

GA 1001



GA 1002

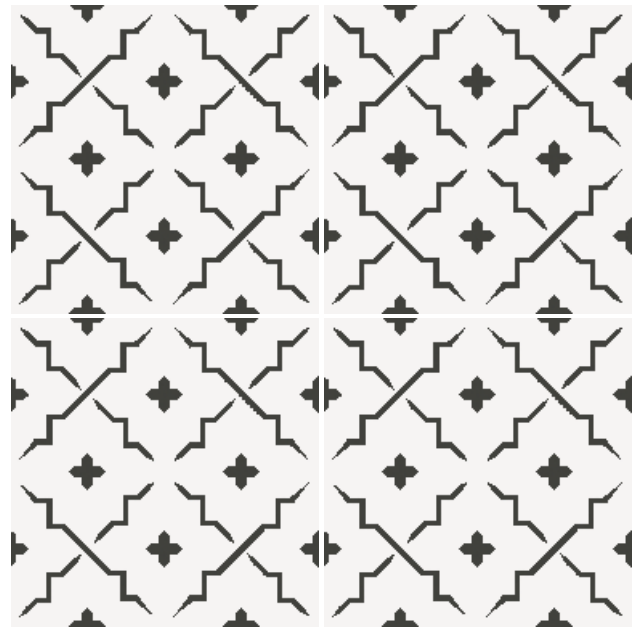
Digital

198 x 198 mm

Matt



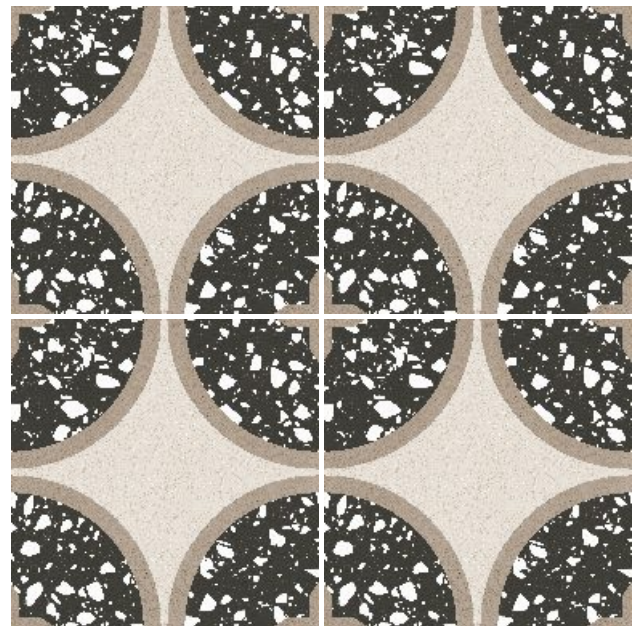
GA 1003



GA 1004



GA 1005



GA 1006

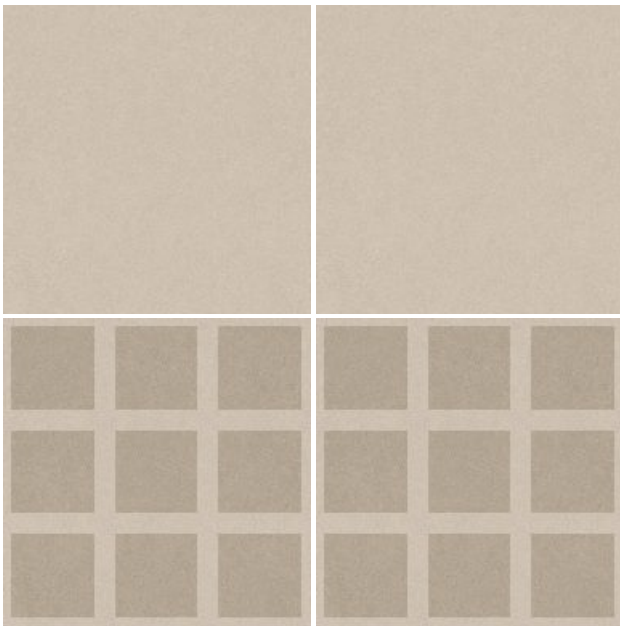


Digital

198 x 198 mm

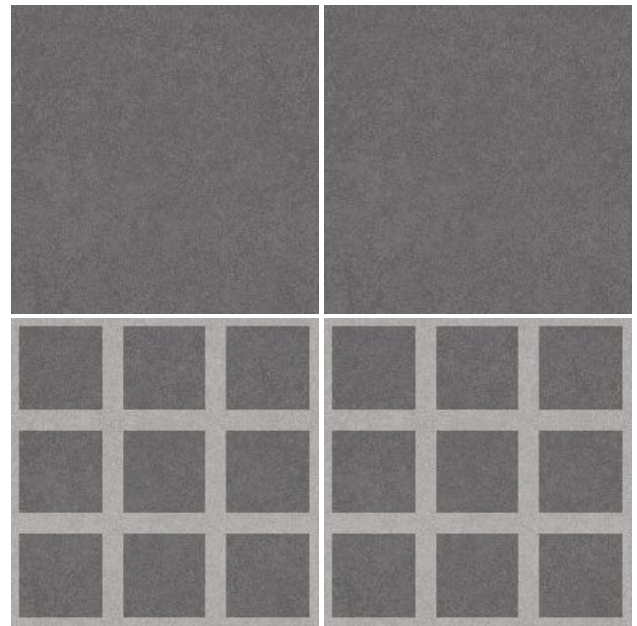
Matt

GA 1007



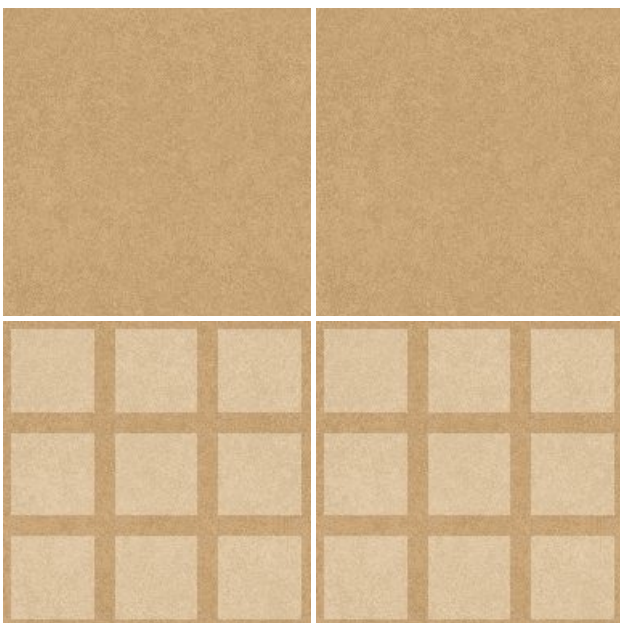
GA 1008

GA 1009



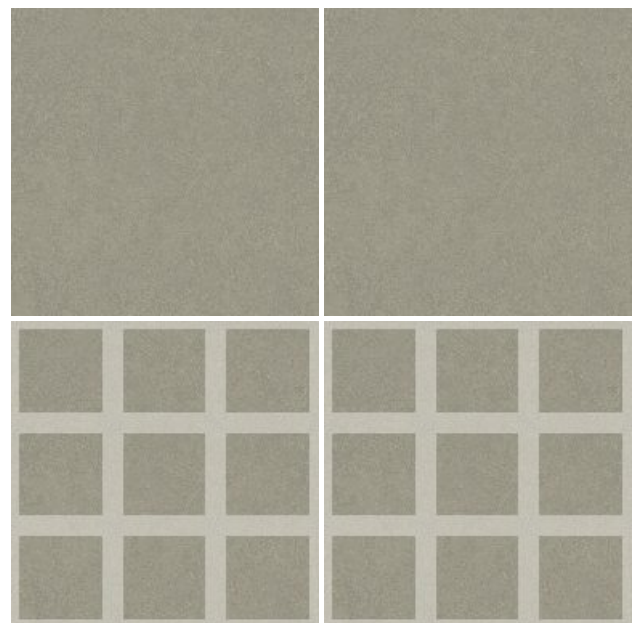
GA 1010

GA 1011



GA 1012

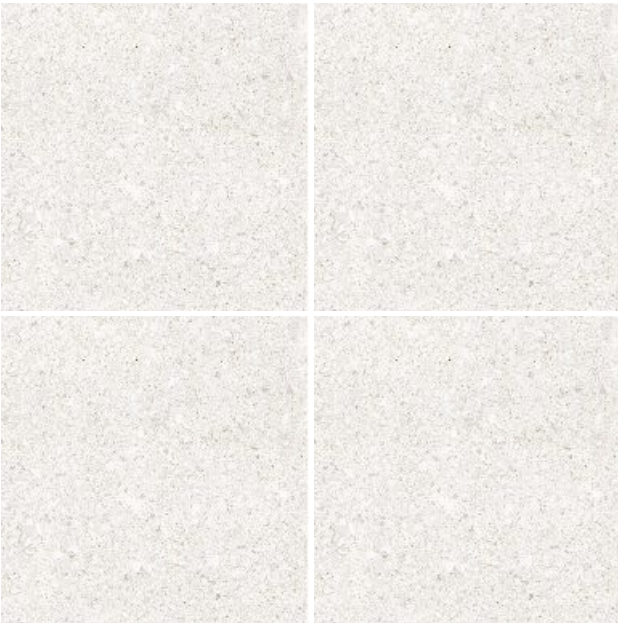
GA 1013



GA 1014



GA 1020



GA 1015



GA 1016

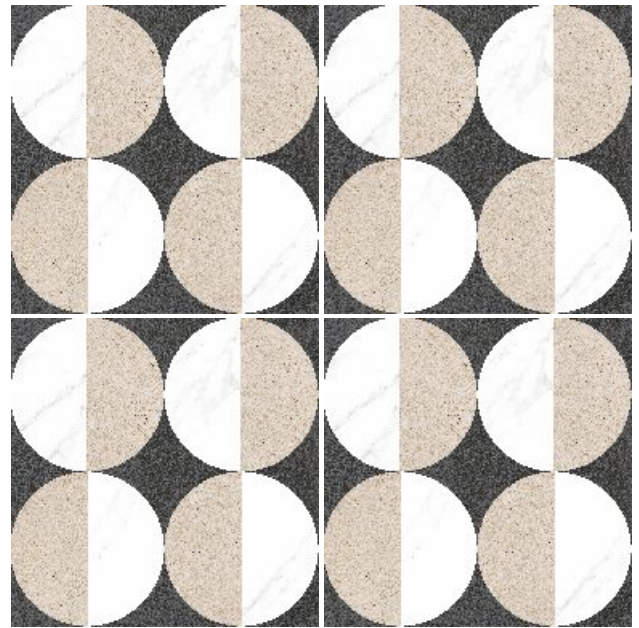
Digital

198 x 198 mm

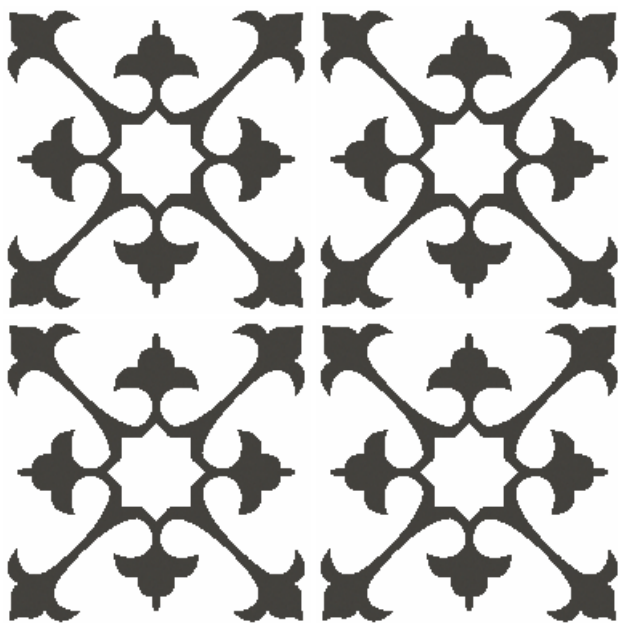
Matt



GA 1017



GA 1018



GA 1019



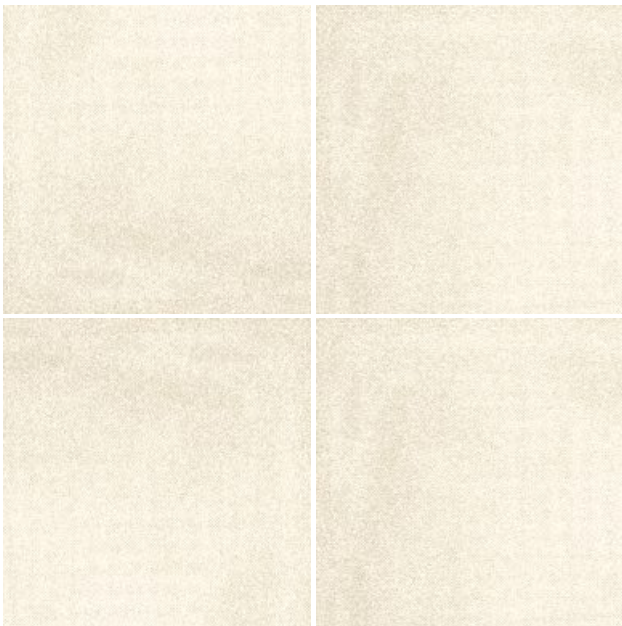
GA 1020



Digital

198 x 198 mm

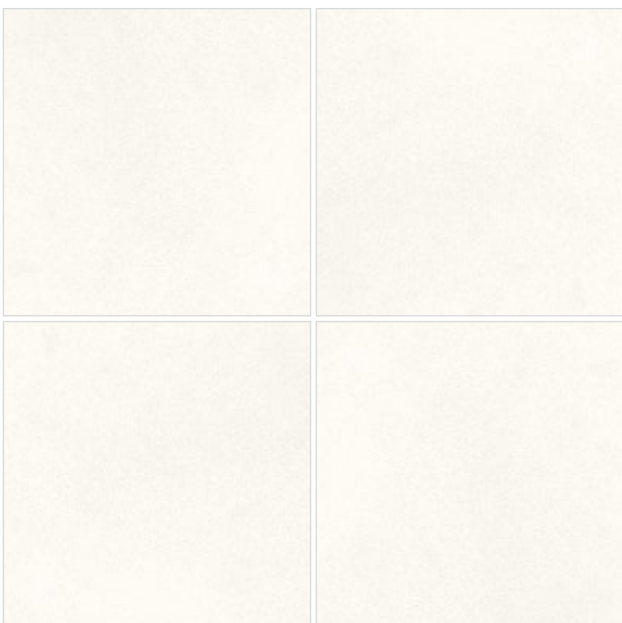
Matt



GA 1021



GA 1022



GA 1023



GA 1024



Digital

198 x 198 mm

Matt



GA 1025



GA 1026



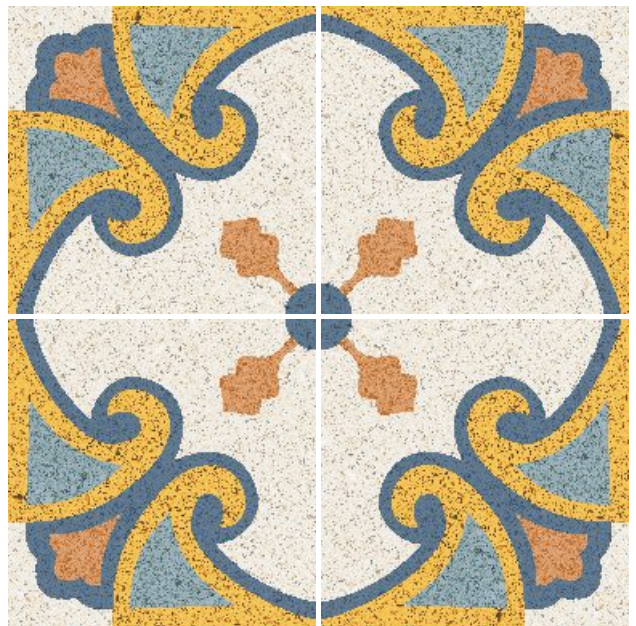
GA 1027



GA 1028 & GA 1029



GA 1028



GA 1029

Digital

198 x 198 mm

Matt



GA 1030



GA 1031

GA 1032



GA 1033

GA 1034



GA 1035







GA 1037 & GA 1038



GA 1036



GA 1037

GA 1038

Digital

198 x 198 mm

Matt



GA 1039

GA 1040



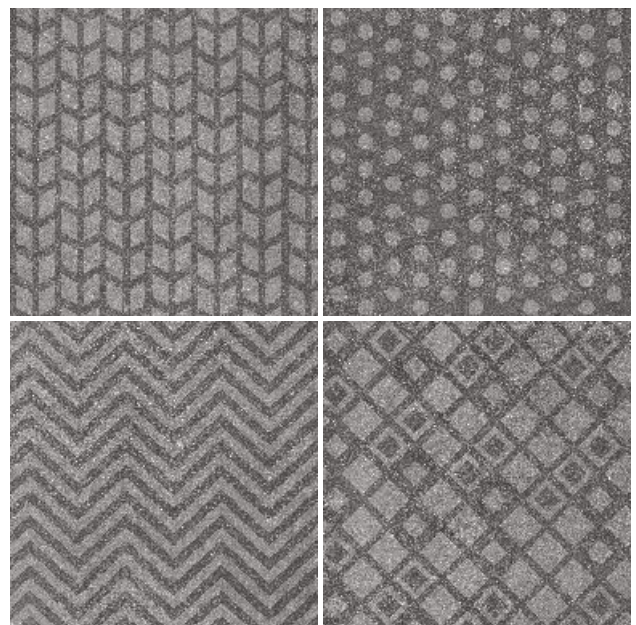
GA 1041



GA 1042



GA 1043



GA 1044







GA 1045 & GA 1046

GA 1045



GA 1046

Digital

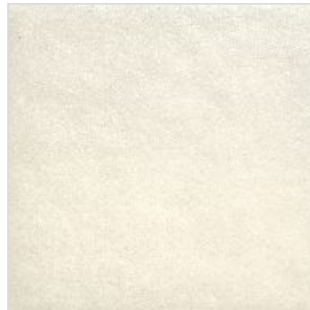
198 x 198 mm

Matt

GA 1047



GA 1048



GA 1049



GA 1050



GA 1051



GA 1052



GA 1053



GA 1054



GA 1055









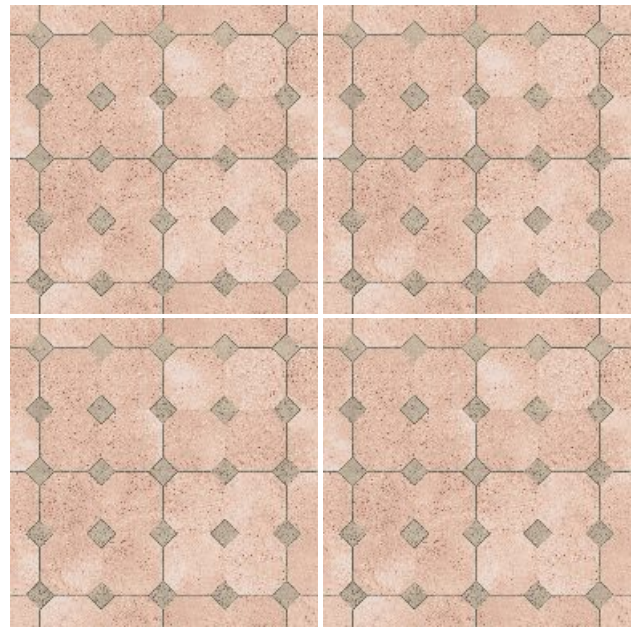
Special Effects

198 x 198 mm

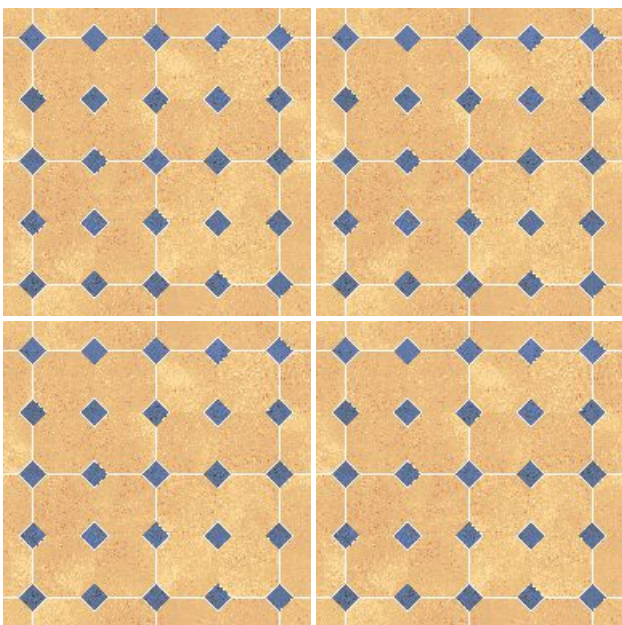
Glue & Granula



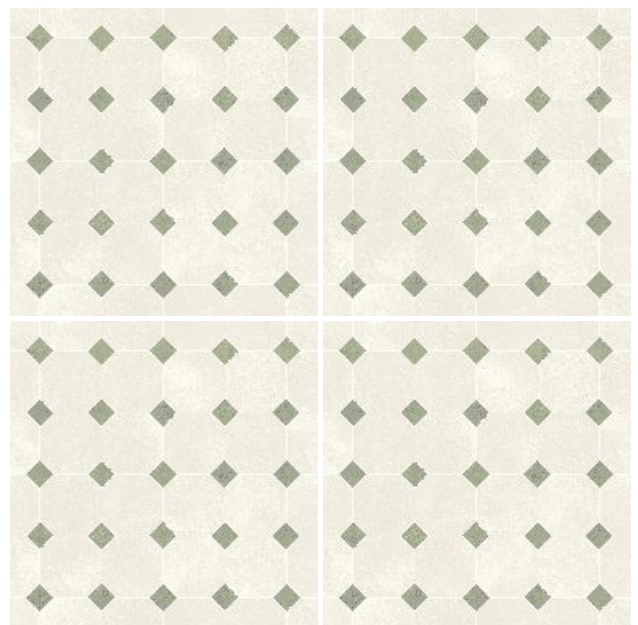
GA 1056



GA 1057



GA 1058



GA 1059

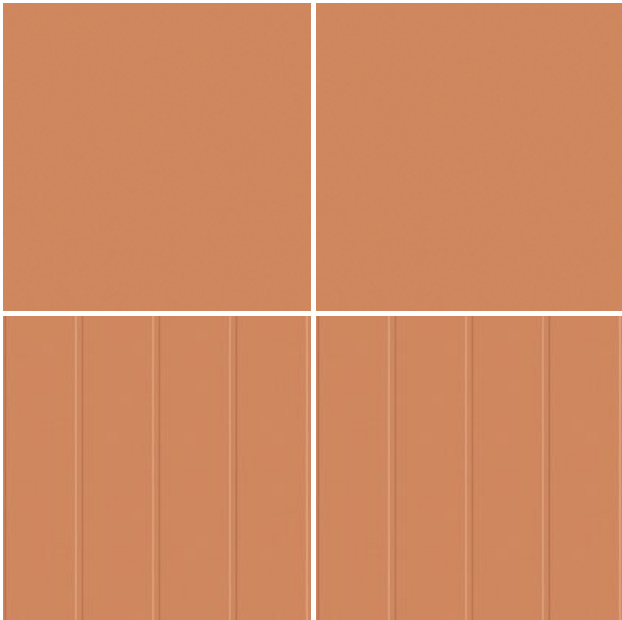






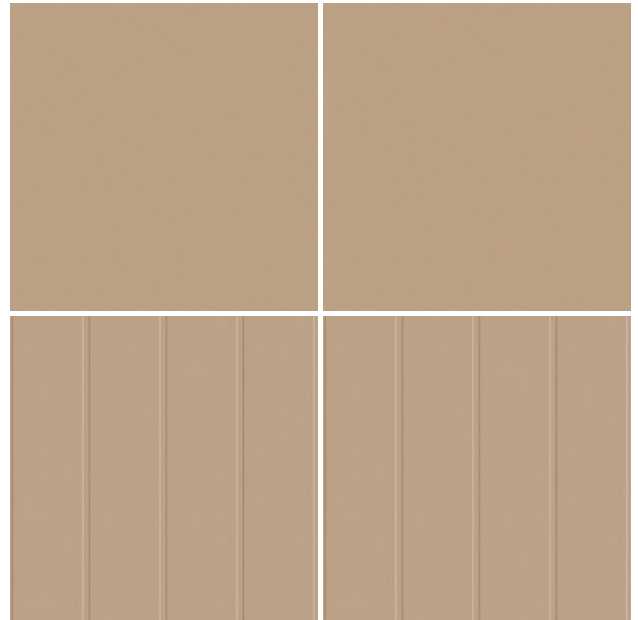
GA 1061 & GA 1067

GA 1060



GA 1066

GA 1061



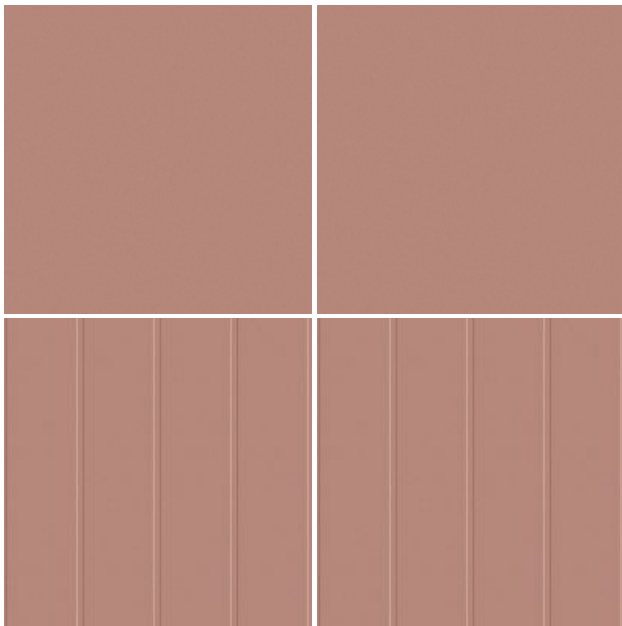
GA 1067

Color Body

198 x 198 mm

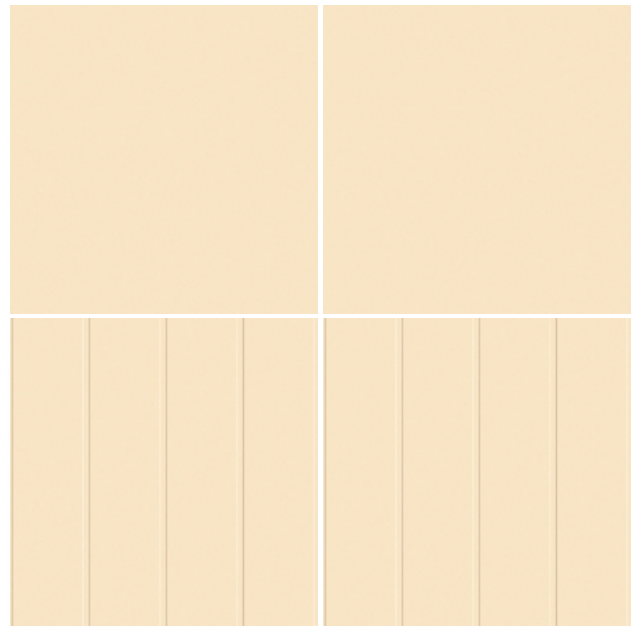
Matt

GA 1062



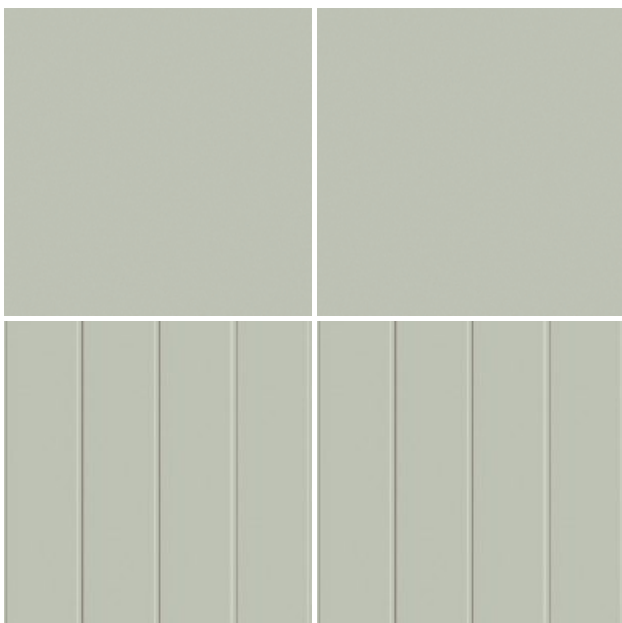
GA 1068

GA 1063



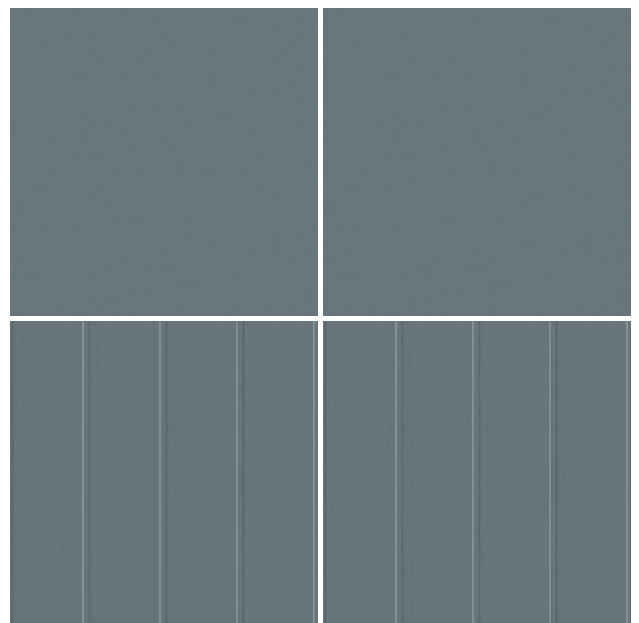
GA 1069

GA 1064



GA 1070

GA 1065



GA 1071



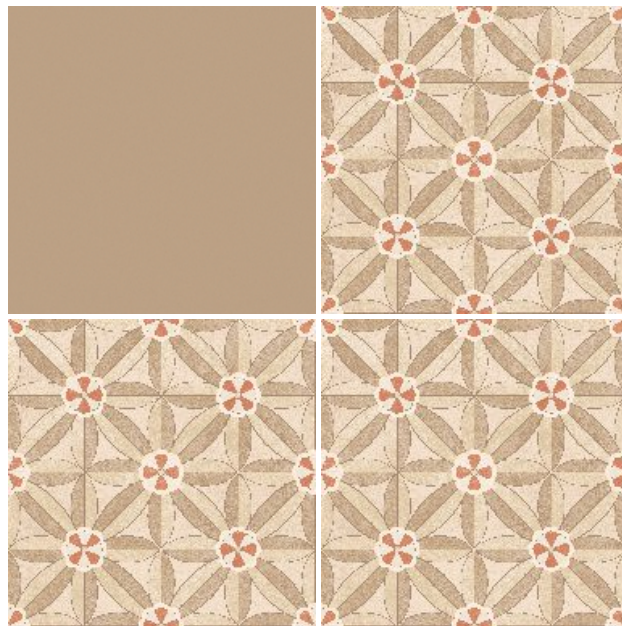
GA 1061 & GA 1073

GA 1060 (Matt)



GA 1072 (Glue & Granula)

GA 1061 (Matt)



GA 1073 (Glue & Granula)

Special Effects

198 x 198 mm

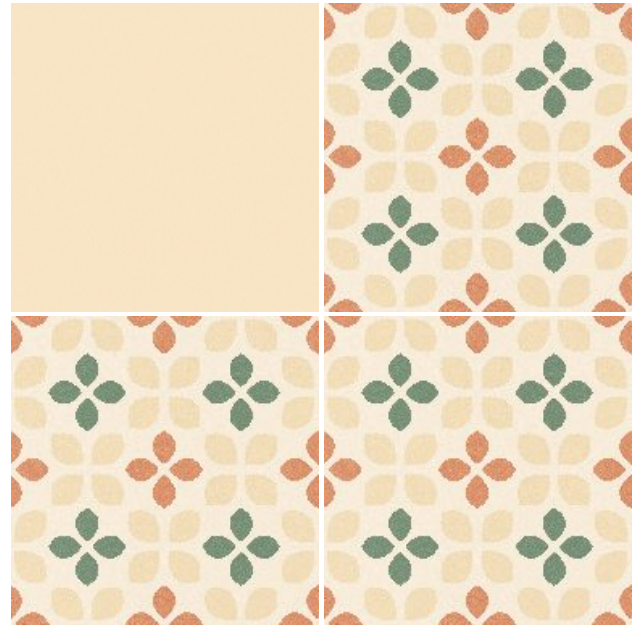
Matt / Glue & Granula

GA 1062 (Matt)



GA 1074 (Glue & Granula)

GA 1063 (Matt)



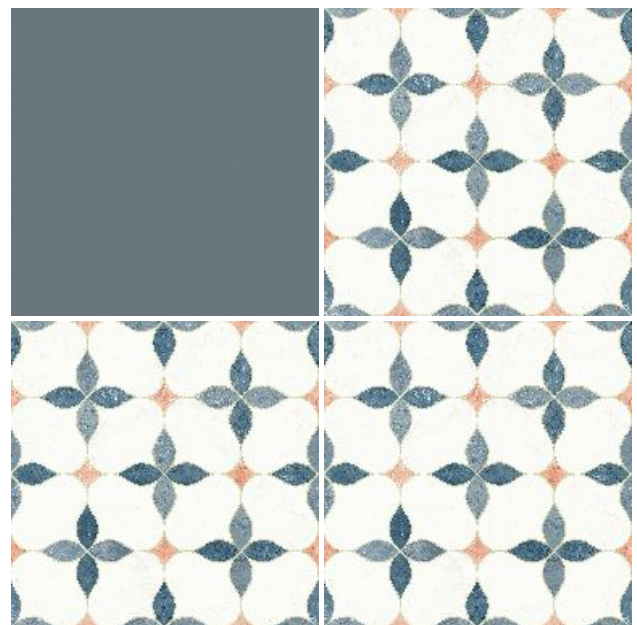
GA 1075 (Glue & Granula)

GA 1064 (Matt)



GA 1076 (Glue & Granula)

GA 1065 (Matt)



GA 1077 (Glue & Granula)

TECHNICAL SPECIFICATIONS

| Work Size | | No. of Tiles / Box | Coverage Area / Box (m ²) | Wt./box (kgs.) | Wt./sqm (kgs.) |
|--------------------|-------------------|--------------------|---------------------------------------|----------------|----------------|
| Dimensions (in mm) | Thickness (in mm) | | | | |
| 198X198 | 9.5 | 20 | 0.78 | 17.00 | 21.79 |
| 75X225 | 9.5 | 37 | 0.62 | 13.50 | 17.31 |

| Sr.No. | Characteristics | Group B1b-ISO 13006:2018-09 | | Method of Testing |
|--------|---|---|---|-------------------|
| | | Nominal size (N) N ≥ 15 cm | KLC Value | |
| 1 | Deviation in Length & Width | ± 0.6 % | ± 0.6 % | ISO-10545-2 |
| 2 | Deviation in Thickness | ± 5.0 % | ± 5.0 % | ISO-10545-2 |
| 3 | Deviation in Straightness of Sides | ± 0.5 % | ± 0.5 % | ISO-10545-2 |
| 4 | Deviation in Rectangularity | ± 0.5 % | ± 0.5 % | ISO-10545-2 |
| 5 | Surface Flatness | | | |
| | a. Centre Curvature (max.) | ± 0.5 % | ± 0.5 % | ISO-10545-2 |
| | b. Edge Curvature (max.) | ± 0.5 % | ± 0.5 % | ISO-10545-2 |
| | c. Corner Warpage (max.) | ± 0.5 % | ± 0.5 % | ISO-10545-2 |
| 6 | Surface Quality | A min. 95% of the tiles are to be free from visible defects | A min. 95% of the tiles are to be free from visible defects | ISO-10545-2 |
| 7 | Water Absorption | 0.5% < Eb ≤ 3.0% Ind. Max. 3.3% | 2.0 - 3.0 % | ISO-10545-3 |
| 8 | Abrasion Resistance | Report abrasion class and cycles passed | Min. class 2 | ISO-10545-7 |
| 9 | Modulus of Rupture N/mm ² | Min. 30, Individual min. 27 | Min. 30, Individual min. 27 | ISO-10545-4 |
| 10 | Breaking Strength (in Newtons) | a. Thickness ≥ 7.5 mm, not less than 1100 b. Thickness < 7.5 mm, not less than 700 | Thickness ≥ 7.5 mm, not less than 1100 | ISO-10545-4 |
| 11 | Crazing Resistance | Required | 4 cycle at 7.5 bar min. | ISO-10545-11 |
| 12 | Resistance to Staining | Min. class 3 | Min. class 3 | ISO-10545-14 |
| 13 | Resistance to Household chemicals and swimming pool salts | Minimum class B | Minimum class B | ISO-10545-13 |
| 14 | Moisture Expansion in millimetres per metre | Test method available | Negligible | ISO-10545-10 |
| 15 | Thermal Shock Resistance | Test method available | No damage | ISO-10545-9 |

- Colours in the catalogue are as accurate as printing process allows. please check actual tile sample before making the final selections.
- Sizes mentioned in the catalogue are nominal sizes only.
- No claim will be entertained once the tiles are fixed.
- For better laying, please follow the instructions on the packaging box.
- Please make sure to check the shade/finish with the sales agent/ dealer before making the final purchase because there might be variation in actual finish that shown in the catalogue. The company will not bear any loss in such case.

TECHNICAL SPECIFICATIONS

| Work Size | | Pieces/box (Nos) | Coverage / Box (m ²) | Weight/box (kgs.) | Weight/sq. mtr.(kgs.) |
|------------------------|-------------------|------------------|----------------------------------|-------------------|-----------------------|
| Dimensions (in mm) | Thickness (in mm) | | | | |
| 75X300 (HUE COLORS) | 8.70 | 44 | 0.99 | 13.10 | 13.23 |
| 75X300 (BAMBOO SERIES) | 11.50 | 34 | 0.76 | 13.50 | 17.76 |
| 100X300 | 7.70 | 33 | 0.99 | 13.30 | 13.43 |

COMPARISON OF KAJARIA TILES PARAMETERS TO INDIAN STANDARDS IS:15622:2017

| Sr.No. | Characteristics | IS:15622:2017 | KLC Value | Method of Testing |
|--------|--|-------------------------|--|--------------------|
| 1 | Deviation in Length & Width | Max ± 0.2% | Max ± 0.2% | IS:13630 (Part-1) |
| 2 | Deviation in Thickness | Max ± 5.0% | Max ± 5.0% | IS:13630 (Part-1) |
| 3 | Surface Flatness (Warpage) | Max ± 0.3% | Max ± 0.3% | IS:13630 (Part-1) |
| 4 | Rectangularity (Squareness) | Max 0.2% | Max ±0.2% | IS:13630 (Part-1) |
| 5 | Water Absorption | ≥ 10% | ≥ 10% | IS:13630 (Part-2) |
| 6 | Scratch Hardness of Surface (Mohs) | Min. 3 | Min. 3 | IS:13630 (Part-13) |
| 7 | Resistance to Surface abrasion (of tiles intended for use on floors) | Class II, min | PEI Group II | IS:13630 (Part-11) |
| 8 | Crazing Resistance | Min. 4 cycles @ 7.5 bar | Min. 4 cycles @ 7.5 bar | IS:13630 (Part-9) |
| 9 | Chemical resistance | Required, if agreed | Resistant to all acids and alkalis (except HF and its compounds) | IS:13630 (Part-8) |
| 10 | Modulus of Ruptures (N/mm ²) | | | |
| | Tile thickness ≥ 7.5 mm | 12 N/mm ² | 12 N/mm ² | IS:13630 (Part-6) |
| | Tile thickness < 7.5 mm | 15 N/mm ² | 15 N/mm ² | IS:13630 (Part-6) |
| 11 | Thermal Shock Resistance | Min. 10 cycles | Min. 10 cycles | IS:13630 (Part-5) |

- Colours in the catalogue are as accurate as printing process allows. please check actual tile sample before making the final selections.
- Sizes mentioned in the catalogue are nominal sizes only.
- No claim will be entertained once the tiles are fixed.
- For better laying, please follow the instructions on the packaging box.
- Please make sure to check the shade/finish with the sales agent/ dealer before making the final purchase because there might be variation in actual finish that shown in the catalogue. The company will not bear any loss in such case.

GRÈSBOND

by *Kajaria*



Sher Ki Shakti

PREMIUM TILE ADHESIVES AND GROUTS



Kajaria GRÉS

India's Trusted Tile

EXPERIENCE CENTRES / REGIONAL OFFICE

NORTH

CHANDIGARH :

SCO 17, 1st Floor ,
Sector-7C , Madhya Marg, Chandigarh.
Phones : 0172-4631418, 4631415
E-mail : chandigarh@kajariagres.com

JAMMU :

Marble Market, Near Samsung Plaza,
Satyam Road Trikuta Nagar,
Jammu - 180012, Jammu and Kashmir
Mob. : 7827993481,
Phone : 0191-7966728
E-mail : jammu@kajariagres.com

VARANASI :

Varanasi Trade Centre, Plot No.154/2A,
1st Floor, Near Income Tax Office,
Maqbool Alam Road, Varanasi- 221002
Phone : 0542-2500483
Mob. : 9005092402
E-mail : varanasi@kajariagres.com

DEHRADUN :

485, Dharampur, Haridwar Road, Dehradun
Phone : 0135-2675329
Mob. : 9760044701
E-mail : dehradun@kajariagres.com

LUDHIANA :

Dhanraj Complex, Fourth Floor,
Near P.A.U. Gate No. 2, Ferozpur Road
Ludhiana-141001, Punjab
Phone : 0161-4649002
E-mail : ludhiana@kajariagres.com

JAIPUR :

Ground Floor, Nidhi Kamal Tower,
Plot No 37-38 B, Barwara House,
Ajmer Road, Jaipur - 302006, Rajasthan
Phone : 0141-4910941, 2220244
E-mail : jaipur@kajariagres.com

LUCKNOW

Plot No.146, 2nd Floor, Above Kalyan Jewellers,
Adj. Ghajipur Police Station,
Near Bhootnath Metro Station, Faizabad Road,
Lucknow (UP) - 226016
Phone : 0522- 4029181, Mob. : 9837906663
E-mail : lucknow@kajariagres.com

WEST

AHMEDABAD (Regional Office)

City Centre-2, Office No-504,
5th Floor, Nr. Sukan Mall Cross Road,
Science City Road, Sola, Ahmedabad,
Gujarat - 380060
Mob.: 9909904068
E-mail : ahmedabad@kajariagres.com

PUNE :

201, D S K Gandharva Heights,
Ganeshkhind Road, Shivaji nagar
Pune - 411005, Maharashtra
Phone: 9730088485
E-mail : pune@kajariagres.com

MORBI :

13-16, 4th Floor, Satyam Commercial
Complex, Near Maliya Fatak Over bridge,
8-A National Highway,
Mahendra Nagar, Morbi-363642
Mob.: 7046689961
E-mail : morbi@kajariagres.com

MUMBAI :

B1 - 307, Boomerang, Chandivali Farm Road,
Near Chandivali Studio, Off Saki-vihar Road,
Andheri (E), Mumbai - 400072
Phone : 022-69433100
E-mail : mumbai@kajariagres.com

CENTRAL

RAIPUR :

Shop No.: 507 & 508, 5th Floor,
Lalganga Business Park, NH-43,
Pachpedi Naka, Raipur, Chhattisgarh-492001
Mob: 9926897529, 8669665897, 7714060427
E: raipur@kajariagres.com

INDORE (Regional Office)

S.A. Tower, 1st Floor, 13/3 New Palasia,
Opp. Arya Samaj Building,
Indore - 452001, Madhya Pradesh
Phone : 0731- 4068839, Mob. : 9752593462
E-mail : indore@kajariagres.com

SOUTH

BANGALORE :

No. 121 (Old no. 8),
Opp. Passport Seva Kendra Office,
Lalbagh Road, Bangalore-560027, Karnataka
Mob.: 9447083022
E-mail : bangalore@kajariagres.com

COCHIN :

MN Square, Ground Floor, 549/2,
Near Gold Souk Grande
NH Bypass, Vyttila, Cochin- 682019, Kerala
Phones : 0484-2912000
E-mail : cochin@kajariagres.com

CHENNAI :

Fagun Chambers, Old No: 7,
New No: 26A/2, 1st Floor, Ethiraj Salai,
Egmore , Chennai - 600008, Tamil Nadu
Phones : 044-42691094 / 28264990
E-mail : chennai@kajariagres.com

COIMBATORE :

Ground Floor, 57, Cowley Brown Road,
Near Central Library, R.S.Puram ,
Coimbatore - 641002, Tamil Nadu
Phones : 0422-4350801 / 4350803
E-mail : coimbatore@kajariagres.com

HYDERABAD :

Uma Aishwarya House, H.No 8-2-502/1/AG,
Road No. 7, Banjara Hills,
Hyderabad - 500034, Telangana
Mob.: 9000005392
E-mail : hyderabad@kajariagres.com

EAST

PATNA (Regional Office)

'ANCHAL', House No.-15, Ground Floor
Justice Narayan Path, Nageswar Colony
Patna - 800001, Bihar
Mob. : 9334791993
E-mail : patna@kajariagres.com

KOLKATA (Regional Office)

Tirupati Plaza, 2nd Floor 74/2,
Acharya Jagdish chandra Bose Road,
Kolkata -700 016, West Bengal
E-mail : kolkata@kajariagres.com

Kajaria GRES

India's Trusted Tile

Kajaria Ceramics Limited

Corporate Office: J1/B1 (Extn.), Mohan Co - op Industrial Estate, Mathura Road, New Delhi - 110044, Ph.: 011-26946409

Regd Office: SF-11, Second Floor, JMD Regent Plaza, Mehrauli Gurgaon Road, Village Sikanderpur Ghosi, Gurgaon-122001, Haryana, Ph.:0124-4081281

CIN No. : L26924HR1985PLC056150, Web.: www.kajariagres.com, Toll Free : 1800 120 100

follow us on :   